

# 400 kV TRANSMISSION LINE CORRIDOR SS BITOLA- MK/AL BORDER PROTECTED AREA MAP



1:100,000



NOTES

REVISION					
ISSUE	DATE	DESIGNED BY	CHECKED BY	APPROVED BY	DESCRIPTION


DESIGNER	CHECKED BY	APPROVED BY
Namik Kopliku	Heikki Lehtimäki	Ole Johansen
ISSUE	SCALE	DATE
	1:100000	December-12

DRAWING NO	400 kV TRANSMISSION LINE CORRIDOR
DRAWING TITLE	SS BITOLA- MK/AL BORDER PROTECTED AREA MAP

SUB-PROJECT CODE	WB4bis-REG-ENE-01
------------------	-------------------

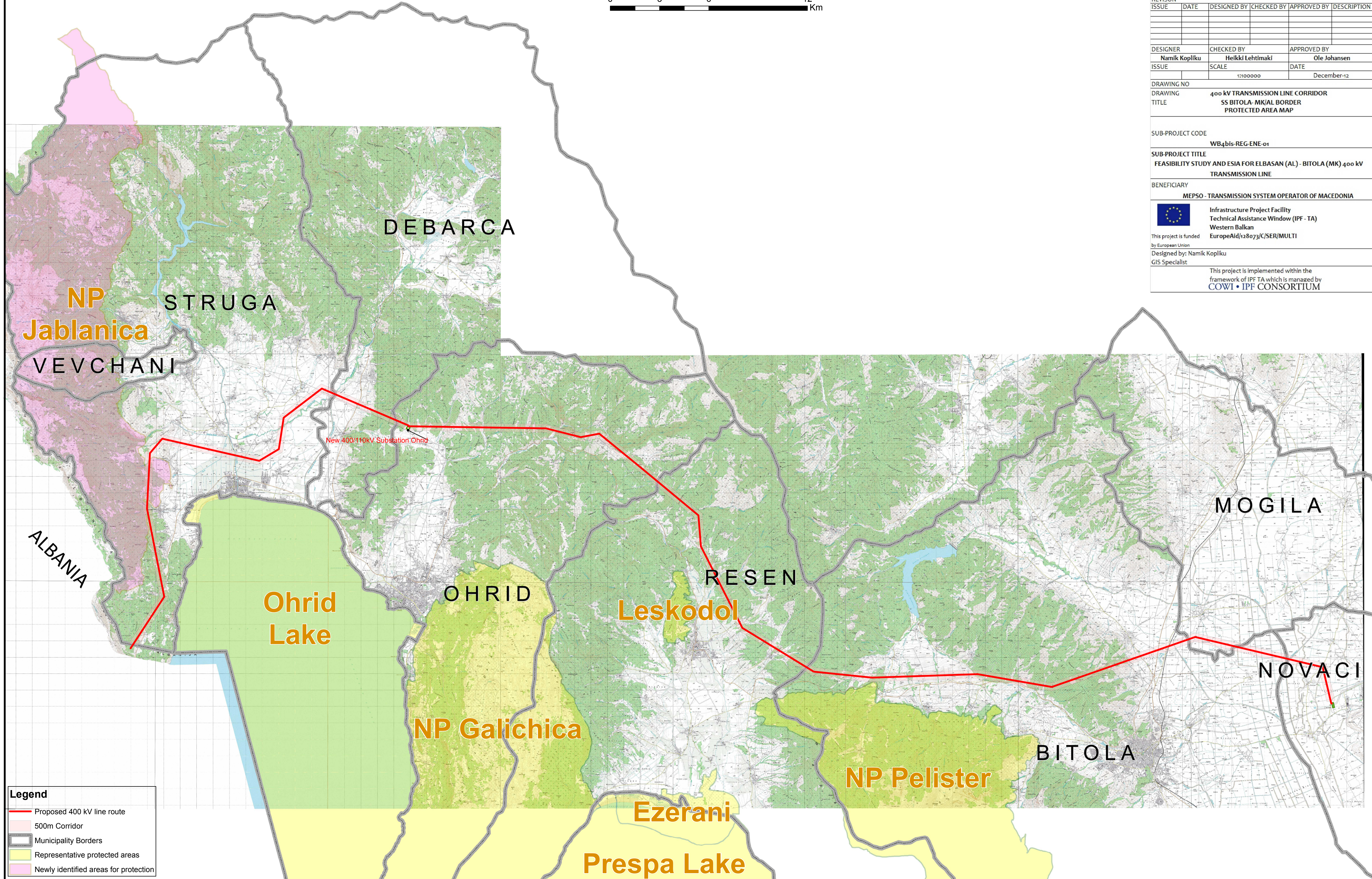
SUB-PROJECT TITLE	FEASIBILITY STUDY AND ESIA FOR ELBASAN (AL) - BITOLA (MK) 400 kV TRANSMISSION LINE
-------------------	---






BENEFICIARY	MEPSO - TRANSMISSION SYSTEM OPERATOR OF MACEDONIA
-------------	---

	Infrastructure Project Facility Technical Assistance Window (IPF - TA) Western Balkan EuropeAid/128073/C/SER/MULTI
---	---

This project is funded by European Union  
Designed by: Namik Kopliku  
GIS Specialist

This project is implemented within the framework of IPF TA which is managed by COWI • IPF CONSORTIUM



Legend	
	Proposed 400 kV line route
	500m Corridor
	Municipality Borders
	Representative protected areas
	Newly identified areas for protection